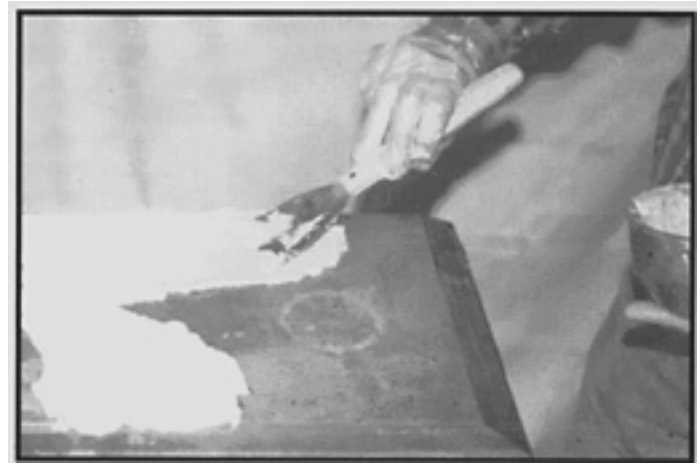


ABR[®]

PRODUCTS, INC.

Restoring, beautifying, preserving wood and stone surfaces.

**Ask about our
certification seminars!**



The photo above illustrates Grip 'N Strip Citrus Paste Formula.

GRIP N'STRIP[®] CITRUS PRODUCT SPECIFICATIONS

PRODUCT NAME(S)

Grip N'Strip[®] Citrus Paste Formula
Grip N'Strip[®] Citrus Gel Formula
Grip N'Strip[®] Citrus Liquid Formula

MANUFACTURER

American Building Restoration
Products, Inc.
9720 South 60th Street
Franklin, WI 53132
(414) 421-4125
1-800-346-7532 (Orders Only)
Fax (414) 421-8696

PRODUCT DESCRIPTION

Basic Use: Grip N'Strip[®] Citrus formulas are designed to remove multiple layers of lead-based paint, latex paint, oil paint, varnish, stain and other finishes from wood, masonry, plastered walls or metal.

Grip N'Strip[®] Citrus is a unique development in the paint and coating removal industry. Grip N'Strip[®] Citrus Formulas do **NOT** contain methylene chloride and offer a fresh citrus scent.

The formulas are recommended for interiors and exteriors. No neutralizing is needed. It is non-damaging to wood, masonry, plastered walls and metal.

Note: Grip N'Strip[®] Citrus may damage or soften asphalt, plastic, rubber, tile, linoleum and adjacent painted surfaces,

In some cases, the Grip N'Strip[®] Citrus formulas can be reused for multiple applications.

Grip N'Strip[®] Citrus formulas are ideal for intricate carvings, moldings, pillars, fine furniture and antiques,

Grip N'Strip[®] Citrus Paste Formula, applied uniformly, penetrates more layers of paint mil thickness and reduces the water rinse normally needed to dissolve stripper residue. The paste formula stays wet, allowing for repeated applications, minimizing the amount of waste discharged into the environment.

Grip N'Strip[®] Citrus Gel Formula provides a less viscous consistency than the paste formula,

Grip N'Strip[®] Citrus Liquid Formula is ideal for the removal of thin layers of varnish, stains and graffiti. The special liquid formula can also be used for the clean up of paint splatters.

Precautions: read the entire material safety data sheet and product label for a thorough evaluation of hazards. Fully protect all adjacent surfaces including vegetation from coming in direct contact with Grip N'Strip[®] Citrus. When stripping interiors, lay plastic sheeting on the floor and cover with stacks of newspaper or card board to absorb scraped residue.

USE ONLY WITH ADEQUATE VENTILATION!

Close container after each use. Avoid inhalation and use only with adequate ventilation. If using indoors, open all windows and door and make sure there is fresh air movement. If adequate ventilation cannot be maintained, wear respiratory protection or leave the area.

CAUTION! This product is combustible. Keep away from heat, sparks, flame and all other sources of ignition.

Eye Protection Required when using this product. Wear chemical splash proof goggles.

TECHNICAL DATA

Color/Form:

Grip N'Strip[®] Citrus Paste Formula-putty colored thick paste.

Grip N'Strip[®] Citrus Gel Formula-putty colored gel.

Grip N'Strip[®] Citrus Liquid Formula-clear liquid.

Coverage:

Note: Product may be reusable on some finishes, increasing the amount of coverage per gallon. The amount of coverage may also vary depending on the surface and the layers of finished to be stripped.

Grip N'Strip[®] Citrus Paste Formula-25 to 75 square feet per gallon.

Grip N'Strip[®] Citrus Gel Formula-75 to 125 square feet per gallon.

Grip N'Strip[®] Citrus Liquid Formula-200 to 250 square feet per gallon.

Packaging: one and five gallon containers.

INSTALLATION

Preparatory Work: prepare a surface free from dirt and oil.

Prior to beginning the overall project, a test should be performed to determine the optimum dwell time for the product, the number of applications necessary to completely remove all traces of finish

from the surface, and if any **Grip N'Strip® Citrus** may be reused for additional application(s).

The user shall determine the suitability of the product for its intended use and assumes all risk and liability whatsoever in connection therewith.

Application:

1. A. Apply **Grip N'Strip® Citrus Paste Formula** approximately 1/8 - 1/4 inch thick with a trowel or brush.
- B. Apply **Grip N'Strip® Citrus Gel Formula** with a natural bristle brush or roller.
- C. Apply **Grip N'Strip® Citrus Liquid Formula** with a natural bristle brush or roller.

2. Allow **Grip N'Strip® Citrus** to remain on the surface until all paint is dissolved. **Grip N'Strip® Citrus Formulas** will penetrate an average of one (1) layer of paint every fifteen (15) to thirty (30) minutes.

Note: Product efficiency is slower in cooler temperatures.

Note: Grip N'Strip® Citrus Paste and Gel Formulas may sag if applied too thick over latex finishes. If sagging occurs, apply thinner coats of **Grip N'Strip® Citrus**. Allow the product to dwell for one (1) hour and apply a second coat directly on top of the first coat,

Removal:

1. Scrape away the dissolved residue. *Forming a membrane may require leaving **Grip N'Strip® Citrus** on the surface beyond 24 hours depending on the temperature and humidity.* Rinse the surface with a clean sponge or scrub brush and clean water to remove excess **Grip N'Strip® Citrus** residue.

Note: Beware of wind drift onto adjacent surfaces while rinsing **Grip N'Strip® Citrus Formulas**.

Note: A soft wire brush may be used to remove dried product missed during rinsing.

2. **Grip N'Strip® Citrus** does not require neutralization.

Storage: Grip N'Strip® Citrus should always be stored in the container in which it was purchased.

Disposal: Contact local, state and/or federal agencies to ensure compliance with regulations governing the disposal of this product along with coatings and finishes that may be removed when using this product.

AVAILABILITY

Available through a network of distributors, representatives and dealers established in principal cities across the United States, Canada and Japan.

Notice: the information and recommendations made herein are based on ABRP, Inc., research and the research of others and are believed to be accurate. However, no guarantee of their accuracy is made since ABRP, Inc., cannot anticipate every possible application of ABRP, Inc., products, nor anticipate every variation encountered in project surfaces, job conditions and methods used. For this reason, purchasers shall make their own tests to determine the suitability of such products for a particular purpose. Purchasers assume all risk of use, application and handling of products. Statements concerning the possible use of ABRP, Inc., products are not intended as recommendation to use ABRP, Inc., products in the infringement of any patent.

LIMITED WARRANTY

This warranty is valid for one year from the date of purchase. The purchaser of this product shall be entitled to the following, if the product herein is shown to be defective: ABRP, Inc., at its option, will either replace the product or refund the purchase price. Contact ABRP, Inc., to make a claim under this warranty. The purchaser must have proof of purchase from the label and the original receipt. Proper surface preparation is essential to the applicability of this warranty. Read and follow the label directions.

ABRP, Inc., shall not be liable for incidental, consequential, or indirect damage arising

from the use of this product or the cost of labor involved in its application.

Seller makes no warranty, expressed or implied, concerning the use of this product other than indicated on the label. Buyer assumes all risk of use and/or handling of this material when such use and/or handling is contrary to label instructions.

No other warranties are made, expressed, or implied, including without limitation warranties as to **MERCHANTABILITY OR FITNESS FOR A PARTICULAR PURPOSE**.

This limited warranty may not be modified or extended by manufacturer's representatives, distributors or dealers of ABRP, Inc., products.

Some states do not allow the exclusion or limitation of incidental or consequential damages so the above limitation or exclusion may not apply to the purchaser. This warranty gives the purchaser specific legal rights, as well as other rights which may vary from state to state.

TECHNICAL SERVICES

ABRP, Inc., employs a ~~manufacturer-~~ direct personal assistance staff and technical representatives to answer questions for architects, building owners and contractors.

REFERENCING

Catalog, product specifications, brochures, a list of national registered historical landmarks restored with ABRP, Inc., products and video training tapes, demonstrating a variety of cleaning and restoration projects being performed with ABRP, Inc., products, are available upon specific request.

ABRP, Inc. is on the WORLD WIDE WEB. For more information on many of the specialty building restoration products available to you, please see our home page at <http://www.abrp.com> or e-mail ABRP, Inc. at abrp@execpc.com.

@Copyright, 2001, American Building Restoration Products, Inc.

This product specification sheet supercedes all previously published Grip N'Strip Citrus product specification sheets. (2-01/500)