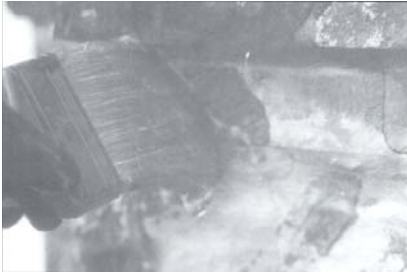


ABR[®] PRODUCT SPECIFICATIONS



PRODUCT NAME

600 Pre-Thickened Efflorescence & Lime Dissolver

MANUFACTURER

American Building Restoration Products, Inc.
9720 South 60th Street
Franklin, WI 53132
U.S.A.
(414) 421-4125
1-800-346-7532 (Orders Only)
Fax (414) 421-8696
www.abrp.com

PRODUCT DESCRIPTION

Basic Use: 600 Pre-Thickened Efflorescence & Lime Dissolver cleans and dissolves lime and calcium base paints often found on old historical landmarks. It also removes excess mortar from brick work. 600 also represents a new concept in efflorescence control.

600 Pre-Thickened Efflorescence & Lime Dissolver is a slow evaporating thick gel that clings to the surface, allowing it to penetrate and remain on the surface longer. A single application of 600 is more efficient than repeated applications of a liquid acid. It allows for a more uniform dissolving action than a flood coat of liquid acid which needs to flow down walls creating streaks, channels and washing away delicate decorative face brick finishes or causing erosion to mortar joints.

600 can be directed to an area without run down, or to a partially cleaned area allowing for less damage to mortar joints and face bricks.

600 contains metal inhibitors to control metallic staining. It will not yellow mortar joints or bleach colored and/or natural joints when used in accordance with directions. 600 will not etch glass.

600 may be used on rough and smooth surfaces of brick, sandstone, limestone, granite, field stone, concrete, terra cotta, precast, stucco, walks and painted masonry swimming pools.

Precautions: read the entire material safety data sheet and product label for a more thorough evaluation of hazards. Fully protect all adjacent surfaces to the area being cleaned, especially newly painted and aluminum surfaces. Beware of wind drift onto auto and pedestrian traffic. Protect vegetation by covering with a tarpaulin. Safety lines and scaffolding must be equipped with steel or synthetic ropes. Use only polyethylene or rubber buckets when working with this product.

Note: use only with adequate ventilation. Wear rubber gloves to protect skin and chemical splash proof goggles.

TECHNICAL DATA

Color/Form: translucent gel.

Coverage: approximately 50 sq. ft. per gallon, which will vary depending on the amount of layers to be dissolved.

Packaging: one, five and fifty-five gallon containers.

INSTALLATION

Preparatory Work: place snow fence or other barrier to protect project area from pedestrian and/or auto traffic. Block entrance doorways and post warning signs to use other exits.

Before beginning overall project, a test area should be cleaned on all elevations to determine precise procedure necessary for most effective cleaning. Allow test area to dry thoroughly before determining results. User shall determine the suitability of the product for its intended use and assumes all risk and liability whatsoever in connection therewith.

Application:

1. Apply the thickest possible coat of 600 with a densely fibered

synthetic brush. To dissolve thick layers, apply a double coat of 600.

2. Allow 600 to remain on surface as long as deemed necessary by test procedure (35 minutes is the usual dwell time).

3. Apply a high pressure water rinse. Adjust pressure accordingly to prevent damage to the masonry. Rinse until sudsing ceases.

AVAILABILITY

Available through a network of distributors, dealers and representatives established in principal cities across the United States, Canada and Japan.

NOTICE: the information and recommendations made herein are based on ABRP, Inc., research and the research of others, and are believed to be accurate. However, no guarantee of their accuracy is made because ABRP, Inc., cannot anticipate every possible application of ABRP, Inc., products, nor anticipate every variation encountered in project surfaces, job conditions, and methods used. For this reason, purchasers shall make their own tests to determine the suitability of such products for a particular purpose. Purchasers assume all risk of use, application and handling of products. Statements concerning the possible use of ABRP, Inc., products are not intended as recommendation to use ABRP, Inc., products in the infringement of any patent.

LIMITED WARRANTY

This warranty is valid for one year from the date of product purchase. Purchaser's claims recovery is limited solely to the following warranty from ABRP, Inc., if the product herein is shown to be defective: ABRP, Inc., at its option, will either replace the product or refund the purchase price. Contact ABRP, Inc., to make claim under this warranty. The purchaser must have proof of purchase from the label and the original sales receipt. Proper surface preparation is





PRODUCT SPECIFICATIONS

essential to the product's performance and is a necessary prerequisite for triggering

ABRP, Inc.'s obligation under this warranty. Read and follow label directions and observe all safety precautions in the use of this product. ABRP, Inc., further disclaims, and shall not be liable for, incidental, consequential or indirect damage and/or personal injuries including death arising from the use of this product or the cost of labor involved in its application or any re-application of product that is replaced. **SELLER MAKES NO WARRANTY,**

EXPRESSED OR IMPLIED, CONCERNING THE USE OF THIS PRODUCT OTHER THAN

INDICATED ON THE LABEL. BUYER ASSUMES ALL RISK OF USE AND/OR HANDLING OF THIS MATERIAL WHEN SUCH USE AND/OR HANDLING IS CONTRARY TO LABEL INSTRUCTIONS. NO OTHER WARRANTIES ARE MADE, EXPRESSED OR IMPLIED, INCLUDING WITHOUT LIMITATION WARRANTIES AS TO MERCHANTABILITY OR FITNESS FOR A PARTICULAR PURPOSE. IN ALL EVENTS, ABRP, INC.'S LIABILITY SHALL BE LIMITED SOLELY TO REPLACEMENT OF THE PRODUCT PROVIDED ABOVE.

This limited warranty may not be modified or extended by manufacturer's representatives, distributors or dealers of ABRP, Inc., products.

This warranty gives the purchaser specific legal rights, as well as rights which may vary from state to state. ABRP, Inc. specifically disclaims any and all other obligations or liability to any party relative to the sale, use or application of its products.

TECHNICAL SERVICES

ABRP, Inc., employs in field technical representatives to answer questions for architects, building owners and contractors.

REFERENCING

Catalog, product specifications, brochures, list of national registered historical landmarks restored with ABRP, Inc., products and video training tapes demonstrating a variety of cleaning and restoration projects being performed with ABRP, Inc. products, are available upon specific request.

ABRP, INC., is on the WORLD WIDE WEB. For more information on many of the specialty building restoration products available to you, please see our home page at <http://www.abrp.com> or e-mail ABRP, Inc. at abrp@abrp.com.

ã Copyright, 2008, American Building Restoration Products, Inc.

